
Retail Solutions Asia Pacific

SAP Inventory Management RF Scanning Solution

V1.02



RF scanning for SAP

RSAP's RF scanning solution for SAP provides packaged functionality for integrating RF scanning guns with SAP's Inventory Management module

Benefits:

- Supports the key inventory management processes usually executed using RF scanning
- Comes with pre-defined process documentation for each of the processes
- Simplifies and shortens the implementation times of the RF scanning solution
- Typically meets 90%+ of functional and technical requirements "out-of-the-box"
- Can be implemented on a "modular" basis
- Customer-specific customisation can be performed on the individual modules
- Has been designed with the end user in mind
- Two "skins" are available - character-based and browser-based
- The solution is future-proofed through the use of the WebSAPConsole platform

Functionality “out-of-the-box”

The following “building blocks” functionality is available:

Receiving:

- Receive against a Purchase Order
- Receive with no Purchase Order
- Receive from the Distribution Centre (against a pallet or carton SSCC)
- Receive a customer return
- Receive against an Stock Transport Order

Issuing:

- Return product to vendor
- Issue against an Stock Transport Order
- Issue against a customer order

Stock take:

- Perform cycle count

Lookups:

- Lookup article details

Sample screen shots - character based

1. Logging on:

```
C:\ Telnet ftcsapcontst1
Client 410
Name ?
Password *****
Language
Transaction
New BCODE
```

2. Main Menu:

```
C:\ Telnet ftcsapcontst1
F2 Clr
F3 Back F4 Nxt
1.Receiving >
2.Sending >
3.Look Up >
4.Print >
F8 LOff Slct
```

3. Receiving Sub-Menu:

```
C:\ Telnet ftcsapcontst1
F2 Clr
F3 Back F4 Nxt
1.Receive PO ...
2.Receive No PO...
3.Receive DC ...
4.Receive Return..
5.Receive STO ...
F8 LOff Slct
```

4. Receive from the DC:

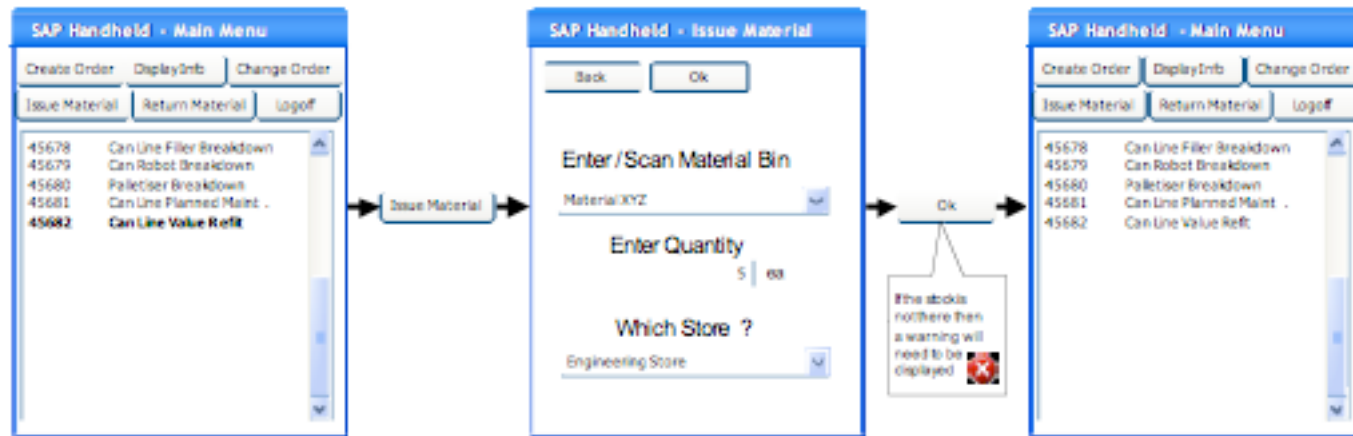
```
C:\ Telnet ftcsapcontst1
RECEIVE DC 1669
Pallet/Carton:
Cartons 0
F1-Exit F2-Uoid
F3-Cmpl F4-Prin
```

Sample screen shots - browser based

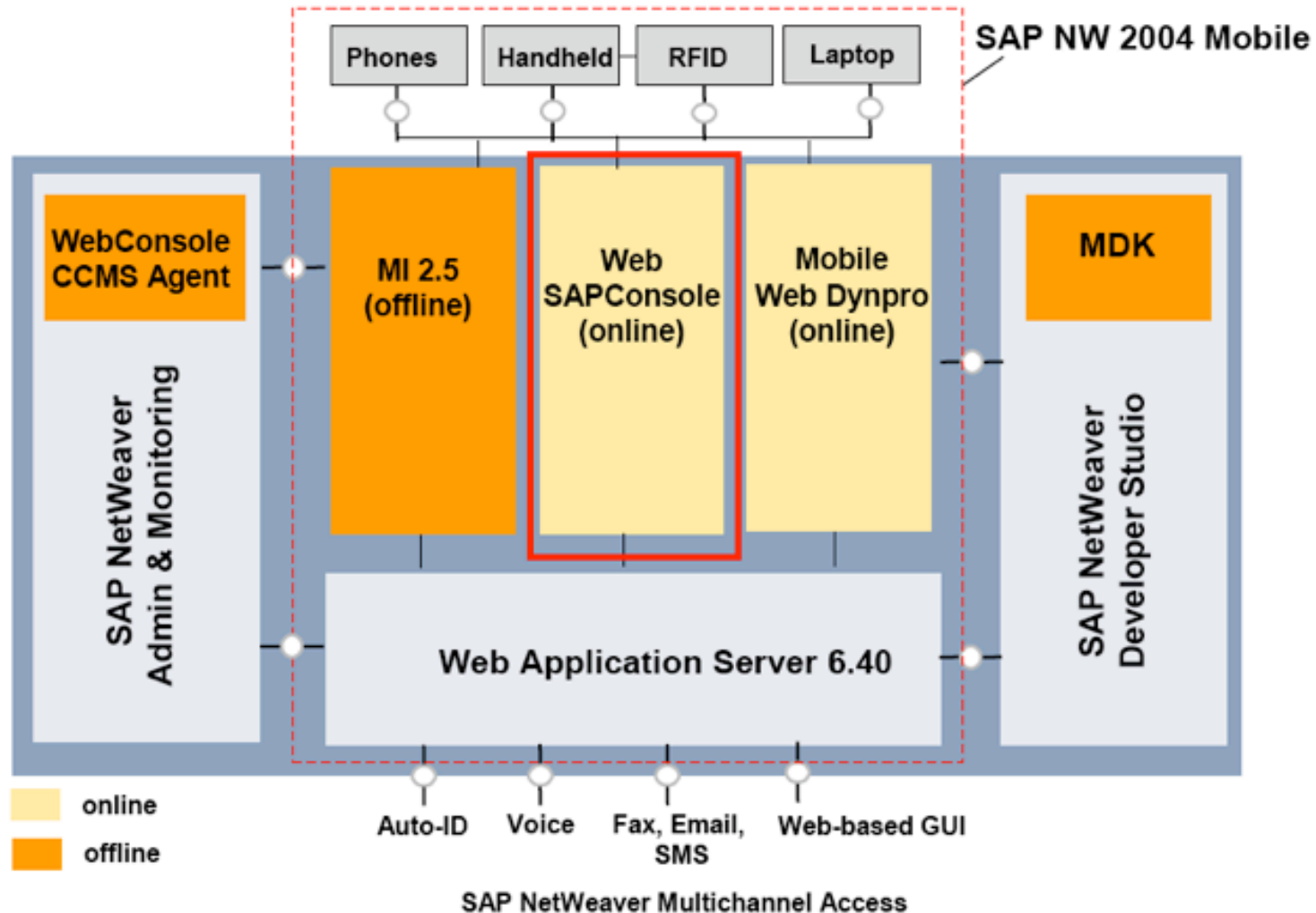
1. Logging on:

The screenshot shows the 'SAP Handheld - Log on' screen. It features the SAP logo and a 'Log on' button. The form includes two input fields: 'Enter SAP Username' with the text 'JANDERSON' and 'Enter SAP Password' with masked characters '*****'.

2. Issue Material:

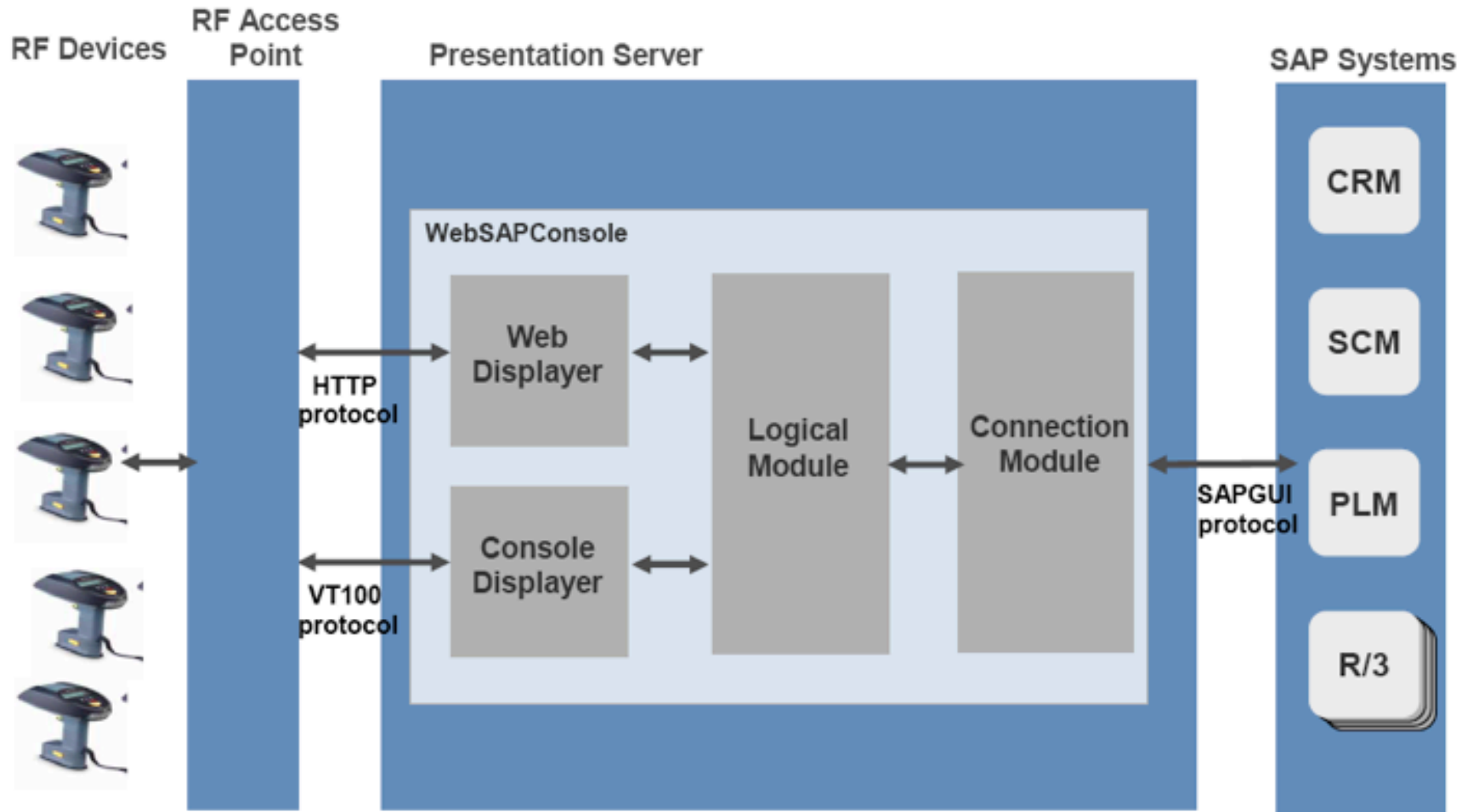


The solution is built on SAP's Netweaver 2004 Mobile Architecture

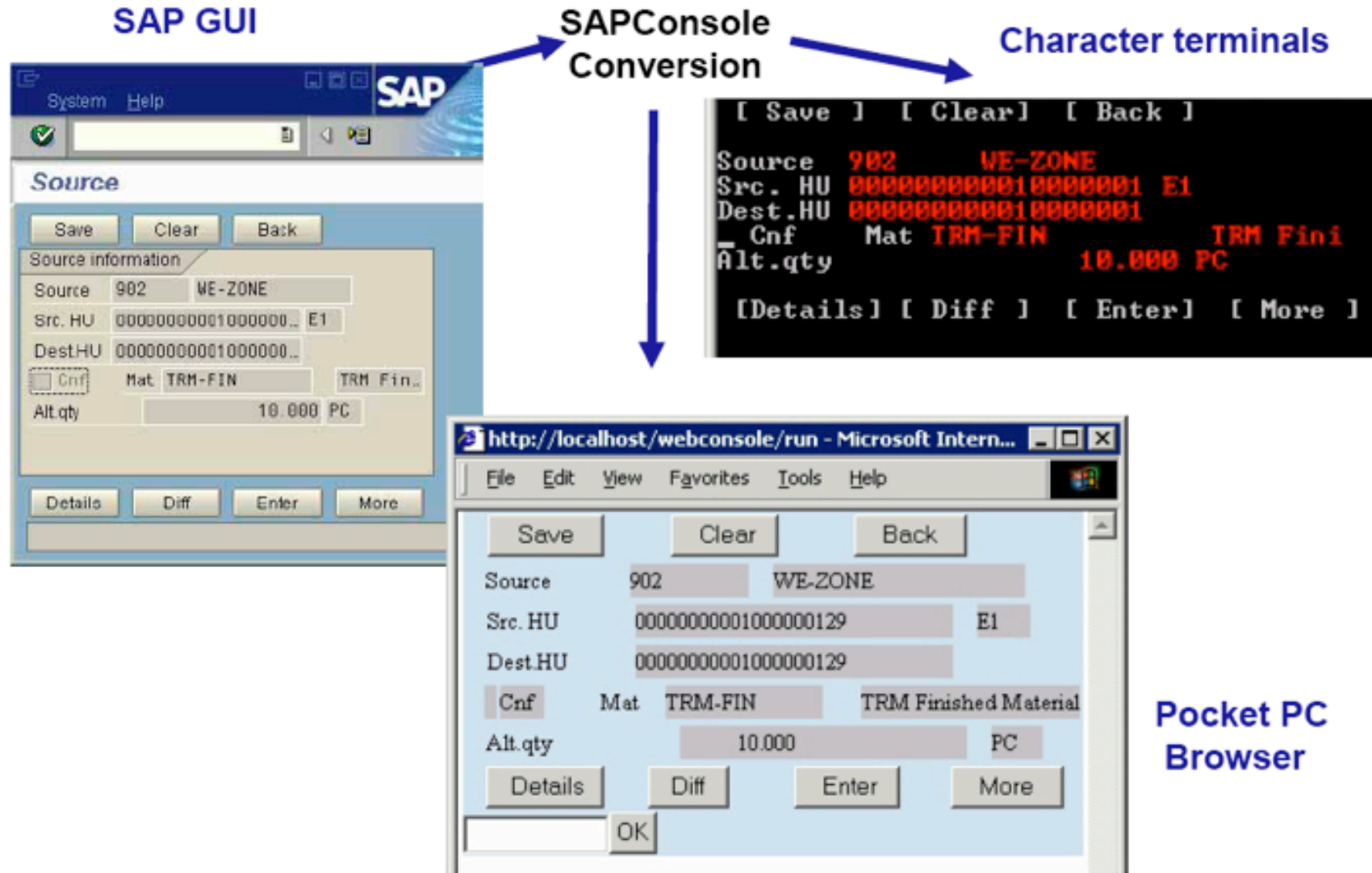


RSAP's RF scanning solution is built on the WebSAPConsole functionality in NetWeaver 2004

WebSAPConsole architecture overview



A single transaction can be presented using multiple “skins”



Sample customers include



Contact details

■ New Zealand

- Retail Solutions Asia Pacific (NZ) Ltd
PO Box 47017
Ponsonby
Auckland 1144
New Zealand

- Level 1, 123 Manukau Road
Epsom
Auckland
New Zealand

■ Australia

- Retail Solutions Asia Pacific Pty Ltd
PO Box 3299
Rhodes
NSW 2138
Australia

■ Phone and email

- T: +64 9 630 9063 (0800 RSAPNZ)
- F: +64 9 630 9065
- E: info@rsap.co.nz

Retail Solutions Asia Pacific provides independent, locally based expert information technology and business consulting services to Australian and New Zealand-based organisations in the retail, wholesale, manufacturing, utilities and forestry sectors.

Our team of consultants has extensive international experience in a very wide range of industry sectors across a broad range of enabling technologies.

In addition to the full range of SAP advisory, implementation, development, upgrade and support services, RSAP also offers strategic, program and project management, business, technical, core functional and change management consulting services to the general retail and distribution sector.